

Neuroscience Nursing, Ltd.

Pamela Jane Nye

Welcome About Calendar Community Nursing Education Symposiums Photos Stories Entrepreneur Contact

About

This "About" page summarizes Neuroscience Nursing, Inc.'s purpose, objectives and the vision for NNL's future success.

[This link](#) (or attached page) lets you access a comprehensive "About Me" file that chronicles my education, teaching and work experiences.

What it doesn't reveal is my growing up in a small Iowa town; ignoring the warnings about California earthquakes; driving 3,000 miles with no job waiting; no place to live; and only \$1,500 in savings!

Fast forward to today, the end result was my having been blessed with so many opportunities to achieve, living a good, healthy, productive and comfortable life. I've also achieved all of my career goals ... and then some.



Simply put, I wanted to use my remaining productive years pursuing the never ending challenge of *making a difference* in other nurses lives. I want to "pay forward" as the saying goes, by helping others to benefit from my diverse nursing experiences. I also want to champion an ongoing public awareness message about nurses as *the unsung, humble heroes of healthcare*.

Moreover, from my symposiums, seminars, public speaking and publication efforts, my plan is to donate 100% of all audited net revenue to fund advanced education for nurses through scholarships.

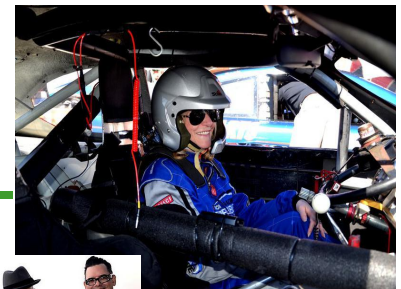
Last, I'm hoping to pioneer some unique, informative approaches to both nurse-related teaching and learning -- and have some fun doing it!

If you are someone, or a company who would consider joining, or becoming involved with my *Operation Scrubs* symposium programs, send an email to me at pamelajaney@operationscrubs.org, and tell me about yourself.

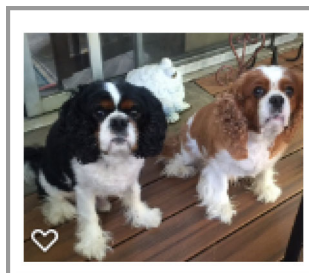
Better yet, pick up the phone and give me a call at (800) 627-6156, Ext. 802.

Until next time ...

Pamela Jane Nye



Fastest lap in Richard Petty's NASCAR: 137 mph ... Deep sea catchin' ...



Something else not explained were my two male companions, *Rascal* and *Chico*, giving much needed comfort and inspiration during those early California adjustment years.

Neither does it explain the decision to retire from my wonderful Stroke Coordinator/Clinical Nurse Specialist position at UCLA Santa Monica Hospital, or the decision to reestablish my Neuroscience Nursing, Ltd. symposium business.

P.S. ... and when I'm not working, I've been turning some of my "bucket list" thoughts into actual experiences:



Zip Lining ... My first Horse Race ... Sky Diving ... Taste of Rattlesnake ...

Big Bad Vodoo Daddy Concert guest ...

Pamela Jane Nye, RN, MS, CNS-BC



As CEO/Owner of Neuroscience Nursing, Ltd., I strive to elevate the knowledge of nurses in the area of brain disorders, diseases, and injury; and to provide hospital leadership with consultation and guidance to obtain and maintain stroke certifications at all levels. Considered an expert in my nursing field, I'm also a legal consultant for attorneys and hospitals. I also volunteer in my community.

Email: pamelajanenye@neurosciencenursing.org / website: www.neurosciencenursing.org

Education and Certifications

- ✓ Major: Nursing / University of California, San Francisco (Master of Science Nursing) 1991
- ✓ Nursing: California State University (Baccalaureate) 1989
- ✓ Nursing: Allen Memorial School of Nursing (Diploma) 1974
- ✓ Certifications: Certified Neuroscience Registered Nurse (CNRN); Stroke Certified Registered Nurse (SCRN); Emergency Neurological Life Support (ENLS); California Board of Registered Nursing / Provider # 17106.

Experience, Advanced Practice, Postgraduate

- OWNER/CHIEF EXECUTIVE OFFICER, NEUROSCIENCE NURSING, LTD., 2019 TO PRESENT
Responsible for the management and development of this company which is devoted to innovative nursing education and inspiring nurses to develop their own businesses. Also, an Associate Professor at UCLA School of Nursing. Generated business revenue is used to fund advanced neuroscience nursing scholarships.
- CEO/BOARD CHAIR: OPERATION SCRUBS, INC., 2019 TO PRESENT
This non-profit business is devoted to the education, honoring, and recognition of nurses through large symposia and unique venues. Conference proceeds are used to fund advanced nursing scholarships.
Website: <https://operationscrubs.org>
- CLINICAL NURSE SPECIALIST, UCLA RONALD REAGAN AND SANTA MONICA, 2012-2019
Responsibilities included orientation of new graduate nurses, competency management of experienced nurses in the areas of neurological and neurosurgical nursing. Provision of large Stroke conferences for >300 participants. Implemented the Donna Wright model of nurse competency evaluation for 3,000-4,000 nurses at UCLA. Stroke Coordinator at UCLA Medical Center/Santa Monica; Associate Professor at UCLA School of Nursing.
- RESEARCH COORDINATOR: UCLA MEDICAL CENTER, FAST-MAG CLINICAL TRIAL, 2004-2006
Responsible for management of participating remote fire stations and hospitals in a Phase III Stroke Trial, worked with the Primary Investigators (Jeff Saver, MD and Sidney Starkman, MD), adherence to data security, securing blinded trial drug/placebo, monitoring effects in participating patients, and data management.
- CLINICAL NURSE SPECIALIST, CEDARS-SINAI MEDICAL CENTER, 1999-2004
Responsible for neurological/neurosurgical practice of >100 nurses in adult and pediatric floors. Developed the video-telemetry unit (4NW) for patients suffering intractable seizures. Chaired the Professional Advancement Committee for nurse promotion guidance. Management of clinic nurses at the Maxine Dunitz Neurosurgical Clinic, specializing in glioblastoma multiforme, a deadly brain tumor. Named "The Nurse of the Year" in 2004.
- CLINICAL NURSE SPECIALIST, UNIVERSITY OF CALIFORNIA, SAN FRANCISCO MED. CTR., 1991-1999
Responsibilities included oversight of clinical practice for >100 nurses working on an Orthopedic/Neurology/Neurosurgery floor. Promoted in 1997 to Director of Post-Acute Services, overseeing two departments. Associate Professor to the UCSF School of Nursing, Masters Entry Program in Nursing.